

The Windsor

The Avalon Collection

Engineered homes built magnificently, promptly, affordably.

Two Story Plan

3 Bedrooms /
2.5 Baths

30'-0" x 27'-6"

1st Floor 825 s.f.

2nd Floor 825 s.f.

Total Living Area
1650 s.f.

Optional Porch
10'-0" x 4'-0"

The Windsor is a charming colonial plan with a large living room, and three bedrooms on the second level. The plan also offers two and half bathrooms, sizeable mudroom with side entrance.

(Shown with optional Porch)



560 Turnpike Street
Canton, MA 02021

Phone: 781-828-2100

Fax: 781-828-1050

Info@avalonbuildingsystems.com
www.avalonbuildingsystems.com

The Windsor

The Avalon Collection

Engineered homes built magnificently, promptly, affordably.

Two Story Plan

3 Bedrooms /
2.5 Baths

30'-0" x 27'-6"

1st Floor 825 s.f.

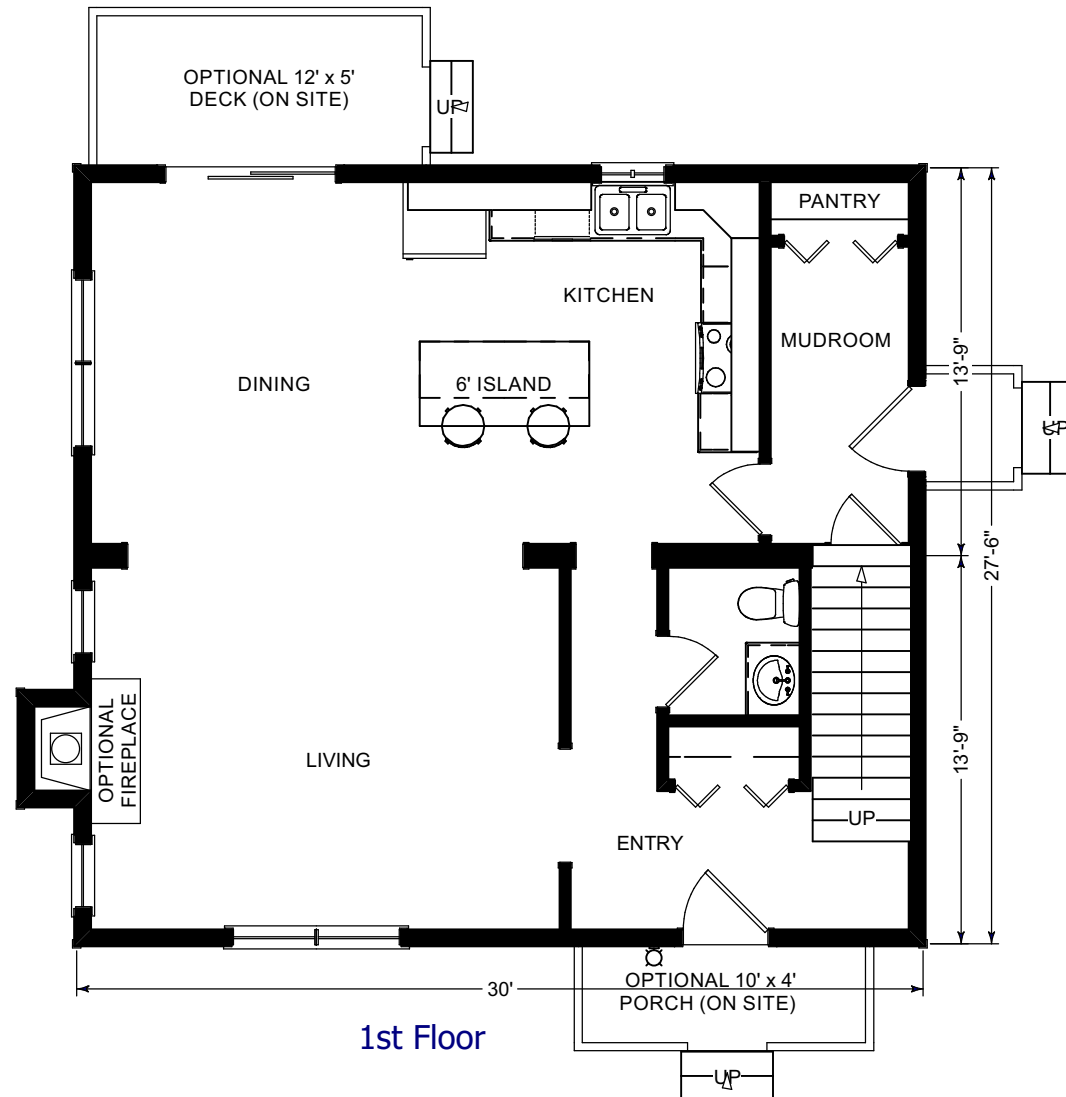
2nd Floor 825 s.f.

Total Living Area
1650 s.f.

Optional Porch
10'-0" x 4'-0"

The Windsor is a charming colonial plan with a large living room, and three bedrooms on the second level. The plan also offers two and half bathrooms, sizeable mudroom with side entrance.

(Shown with optional Porch)



560 Turnpike Street
Canton, MA 02021

Phone: 781-828-2100

Fax: 781-828-1050

Info@avalonbuildingsystems.com
www.avalonbuildingsystems.com

The Windsor

The Avalon Collection

Engineered homes built magnificently, promptly, affordably.

Two Story Plan

3 Bedrooms /
2.5 Baths

30'-0" x 27'-6"

1st Floor 825 s.f.

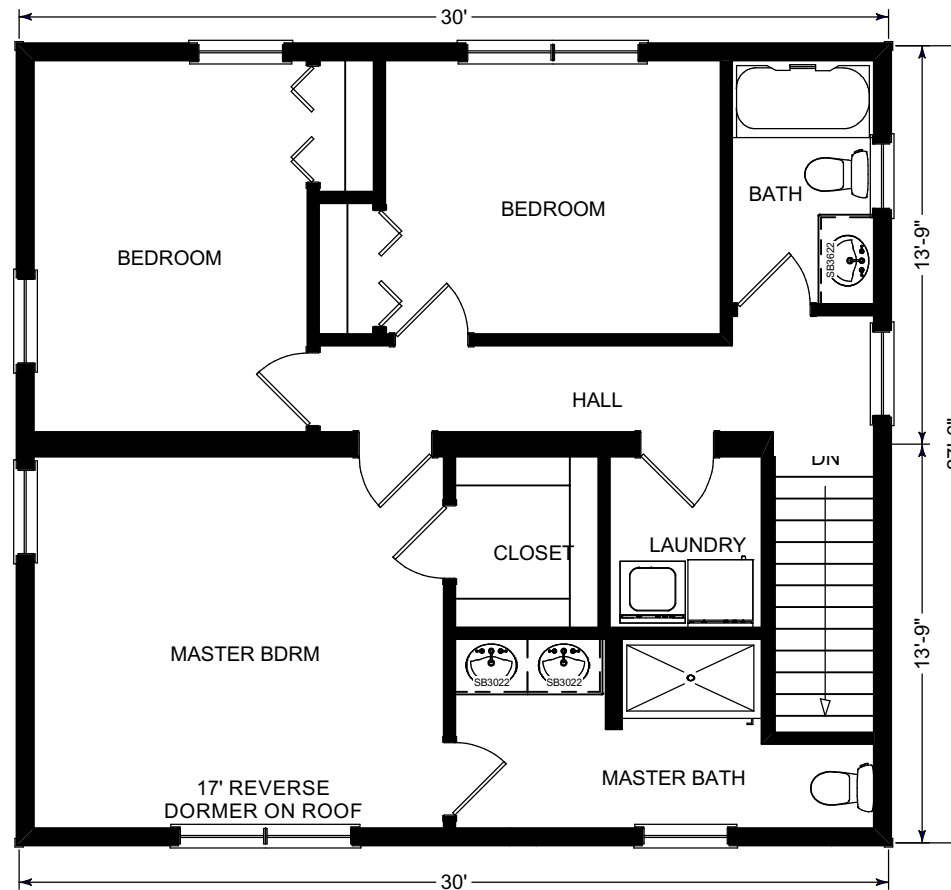
2nd Floor 825 s.f.

Total Living Area
1650 s.f.

Optional Porch
10'-0" x 4'-0"

The Windsor is a charming colonial plan with a large living room, and three bedrooms on the second level. The plan also offers two and half bathrooms, sizeable mudroom with side entrance.

(Shown with optional Porch)



2nd Floor



560 Turnpike Street
Canton, MA 02021

Phone: 781-828-2100

Fax: 781-828-1050

Info@avalonbuildingsystems.com
www.avalonbuildingsystems.com