

The Salisbury

The Avalon Collection

Engineered homes built magnificently, promptly, affordably.

Two Story Plan

4 Bedrooms /
2.5 Baths

38'-0" x 27'-6"

1st Floor 1045 s.f.

2nd Floor 1045 s.f.

Total Living area
2090 s.f.

Optional Porch Shown
38'-0" x 6'-0"

The Salisbury plan offers a great open floor plan which includes four bedrooms on the second floor as well as two and a half bathrooms. The first floor offers a large eat-in kitchen, which opens to a spacious great room.

(Shown with optional Porch).



560 Turnpike Street
Canton, MA 02021
Phone: 781-828-2100
Fax: 781-828-1050

Info@avalonbuildingsystems.com
www.avalonbuildingsystems.com

The Salisbury

The Avalon Collection

Engineered homes built magnificently, promptly, affordably.

Two Story Plan

4 Bedrooms /
2.5 Baths

38'-0" x 27'-6"

1st Floor 1045 s.f.

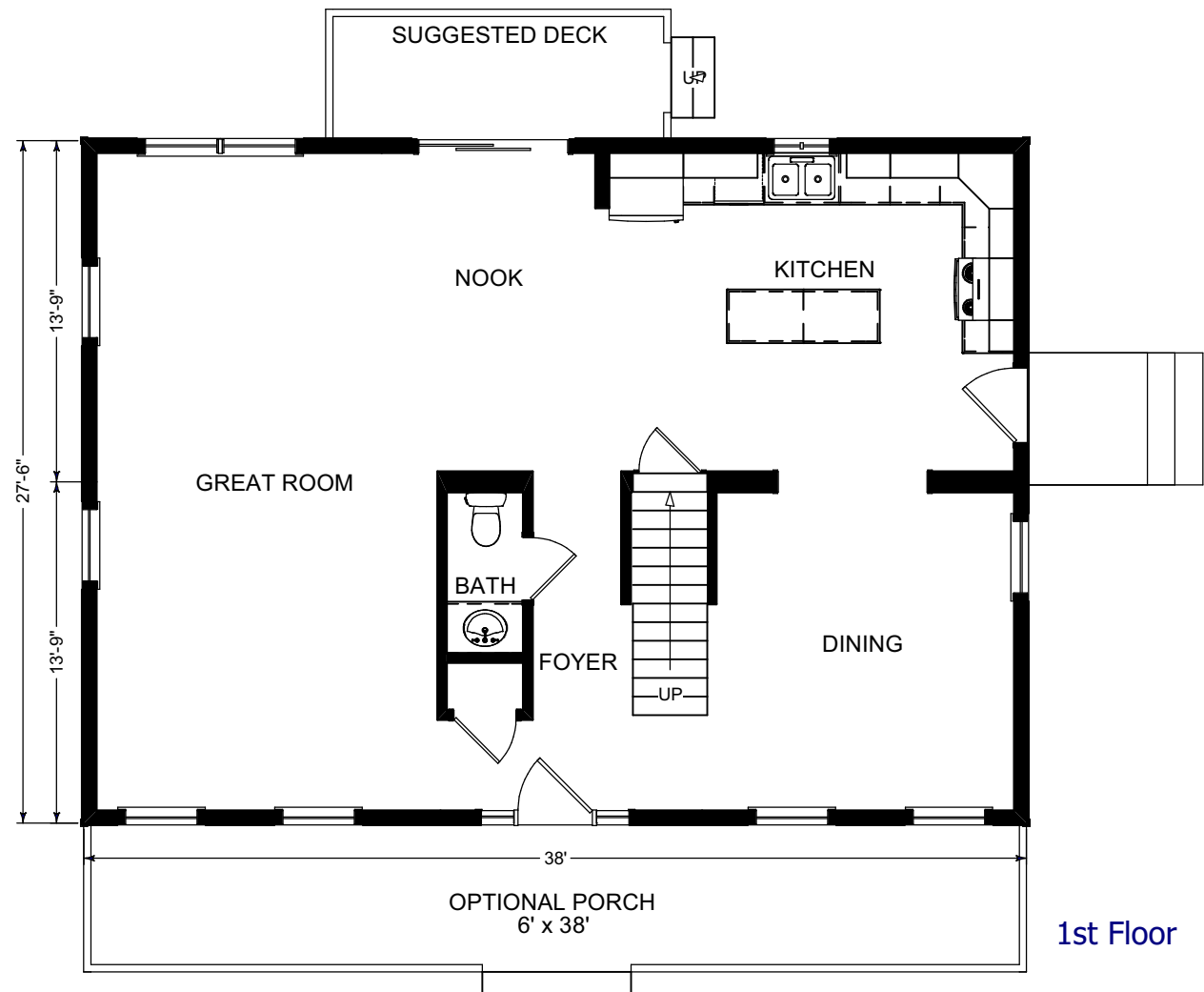
2nd Floor 1045 s.f.

Total Living area
2090 s.f.

Optional Porch Shown
38'-0" x 6'-0"

The Salisbury plan offers a great open floor plan which includes four bedrooms on the second floor as well as two and a half bathrooms. The first floor offers a large eat-in kitchen, which opens to a spacious great room.

(Shown with optional Porch).



560 Turnpike Street
Canton, MA 02021

Phone: 781-828-2100

Fax: 781-828-1050

Info@avalonbuildingsystems.com
www.avalonbuildingsystems.com

The Salisbury

The Avalon Collection

Engineered homes built magnificently, promptly, affordably.

Two Story Plan

4 Bedrooms /
2.5 Baths

38'-0" x 27'-6"

1st Floor 1045 s.f.

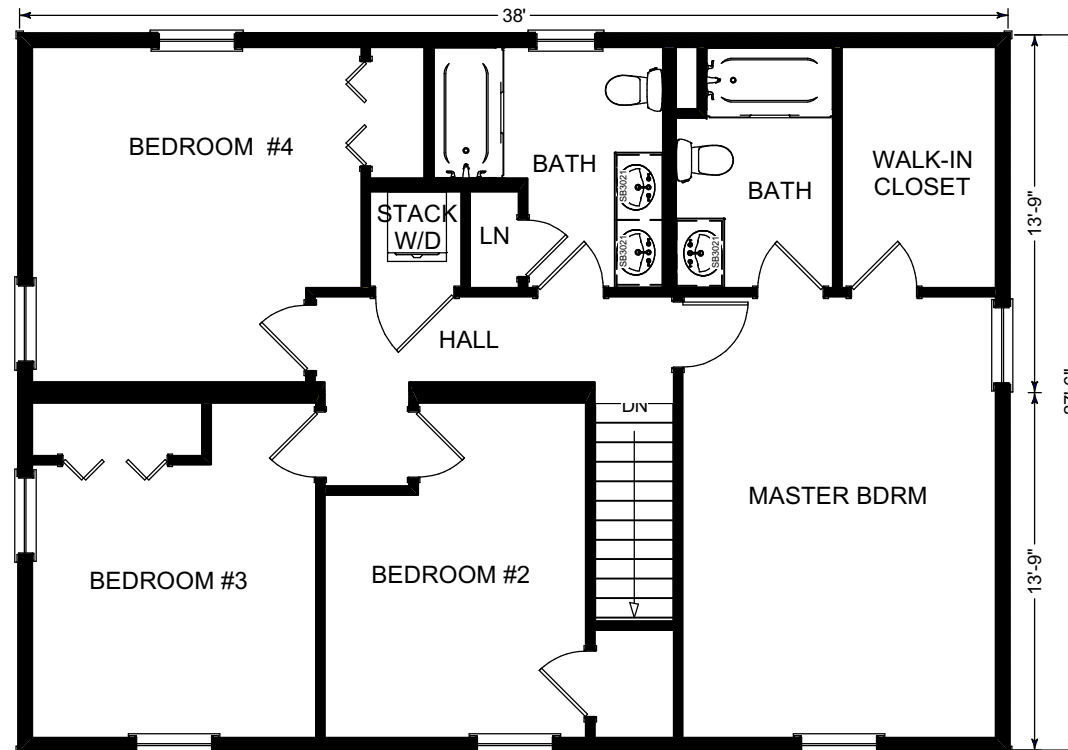
2nd Floor 1045 s.f.

Total Living area
2090 s.f.

Optional Porch Shown
38'-0" x 6'-0"

The Salisbury plan offers a great open floor plan which includes four bedrooms on the second floor as well as two and a half bathrooms. The first floor offers a large eat-in kitchen, which opens to a spacious great room.

(Shown with optional Porch).



2nd Floor



560 Turnpike Street
Canton, MA 02021

Phone: 781-828-2100

Fax: 781-828-1050

Info@avalonbuildingsystems.com
www.avalonbuildingsystems.com