

The Weston

The Avalon Collection

Engineered homes built magnificently, promptly, affordably.

Two Story Plan

4 Bedrooms
2.5 Baths

48'-0" x 27'-6"

1st Floor 1,304 s.f.

2nd Floor 1,304 s.f.

Total Living Area
2,608 s.f.

Shown with optional
garage, bonus room, and
window trim

The Weston is a beautiful four bedroom, two and half bath colonial. The plan has a large kitchen, as well as an optional space above the garage.



560 Turnpike Street
Canton, MA 02021

Phone: 781-828-2100

Fax: 781-828-1050

Info@avalonbuildingsystems.com
www.avalonbuildingsystems.com

The Weston

The Avalon Collection

Engineered homes built magnificently, promptly, affordably.

Two Story Plan

4 Bedrooms
2.5 Baths

48'-0" x 27'-6"

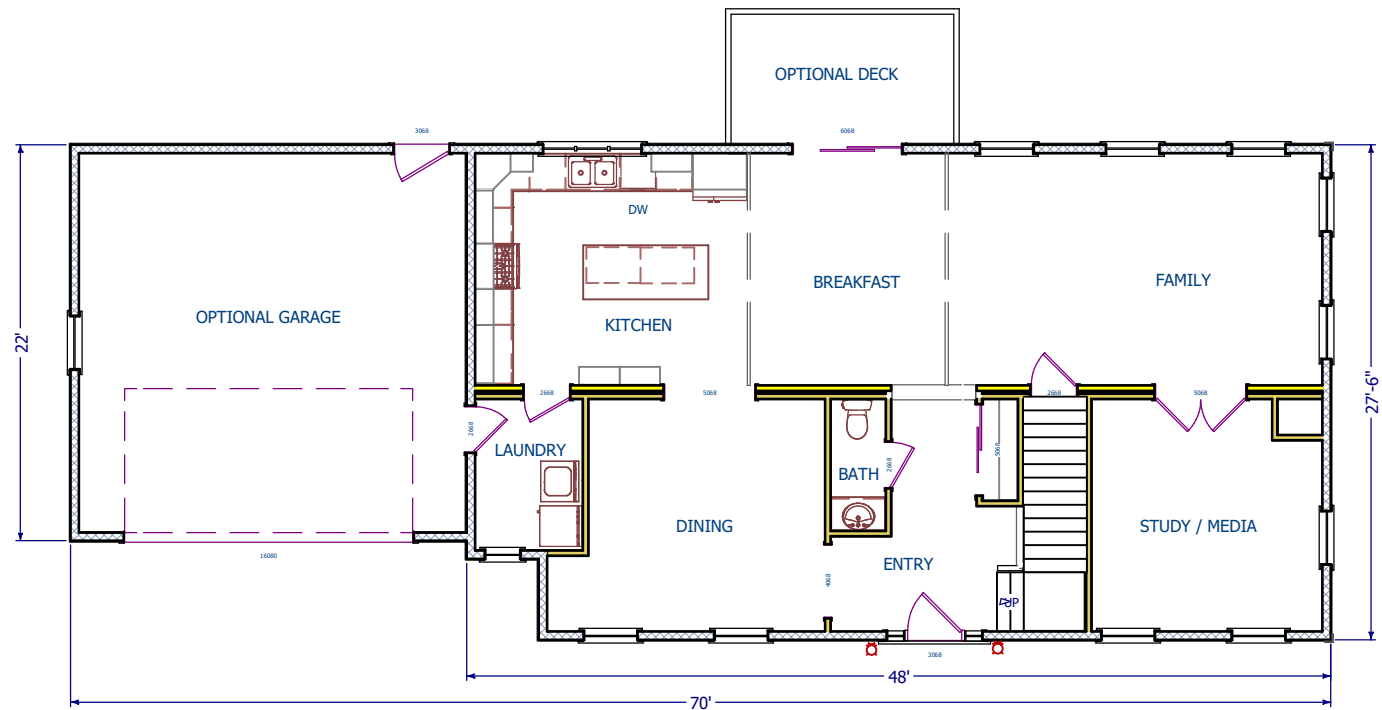
1st Floor 1,304 s.f.

2nd Floor 1,304 s.f.

Total Living Area
2,608 s.f.

Shown with optional
garage, bonus room, and
window trim

The Weston is a beautiful four bedroom, two and half bath colonial. The plan has a large kitchen, as well as an optional space above the garage.



1st Floor



560 Turnpike Street
Canton, MA 02021

Phone: 781-828-2100

Fax: 781-828-1050

Info@avalonbuildingsystems.com
www.avalonbuildingsystems.com

The Weston

The Avalon Collection

Engineered homes built magnificently, promptly, affordably.

Two Story Plan

4 Bedrooms
2.5 Baths

48'-0" x 27'-6"

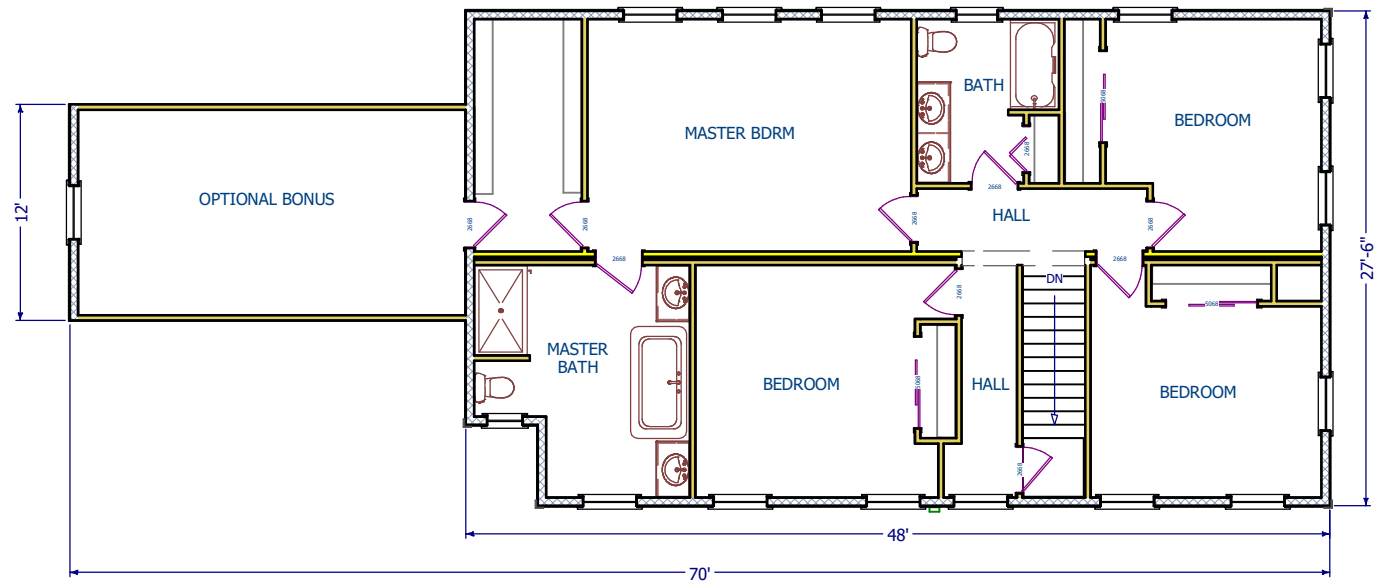
1st Floor 1,304 s.f.

2nd Floor 1,304 s.f.

Total Living Area
2,608 s.f.

Shown with optional
garage, bonus room, and
window trim

The Weston is a beautiful four bedroom, two and half bath colonial. The plan has a large kitchen, as well as an optional space above the garage.



2nd Floor



560 Turnpike Street
Canton, MA 02021

Phone: 781-828-2100

Fax: 781-828-1050

Info@avalonbuildingsystems.com

www.avalonbuildingsystems.com