

The Watertown

The Avalon Collection

Engineered homes built magnificently, promptly, affordably.

Two Story Plan

5 Bedrooms

3.5 Baths

(1st floor Master BR)

48'-0" x 27'-6"

1st Floor 1320 s.f.

2nd Floor 1320 s.f.

Total Living Area
2640 s.f.

Shown with optional
porch

The Watertown plan offers a large open layout with a master suite on the 1st level. The plan also offers 4 additional bedrooms on the second level or an option for a additional family space in lieu of a bedroom.



560 Turnpike Street
Canton, MA 02021

Phone: 781-828-2100

Fax: 781-828-1050

Info@avalonbuildingsystems.com
www.avalonbuildingsystems.com

The Watertown

The Avalon Collection

Engineered homes built magnificently, promptly, affordably.

Two Story Plan

5 Bedrooms

3.5 Baths

(1st floor Master BR)

48'-0" x 27'-6"

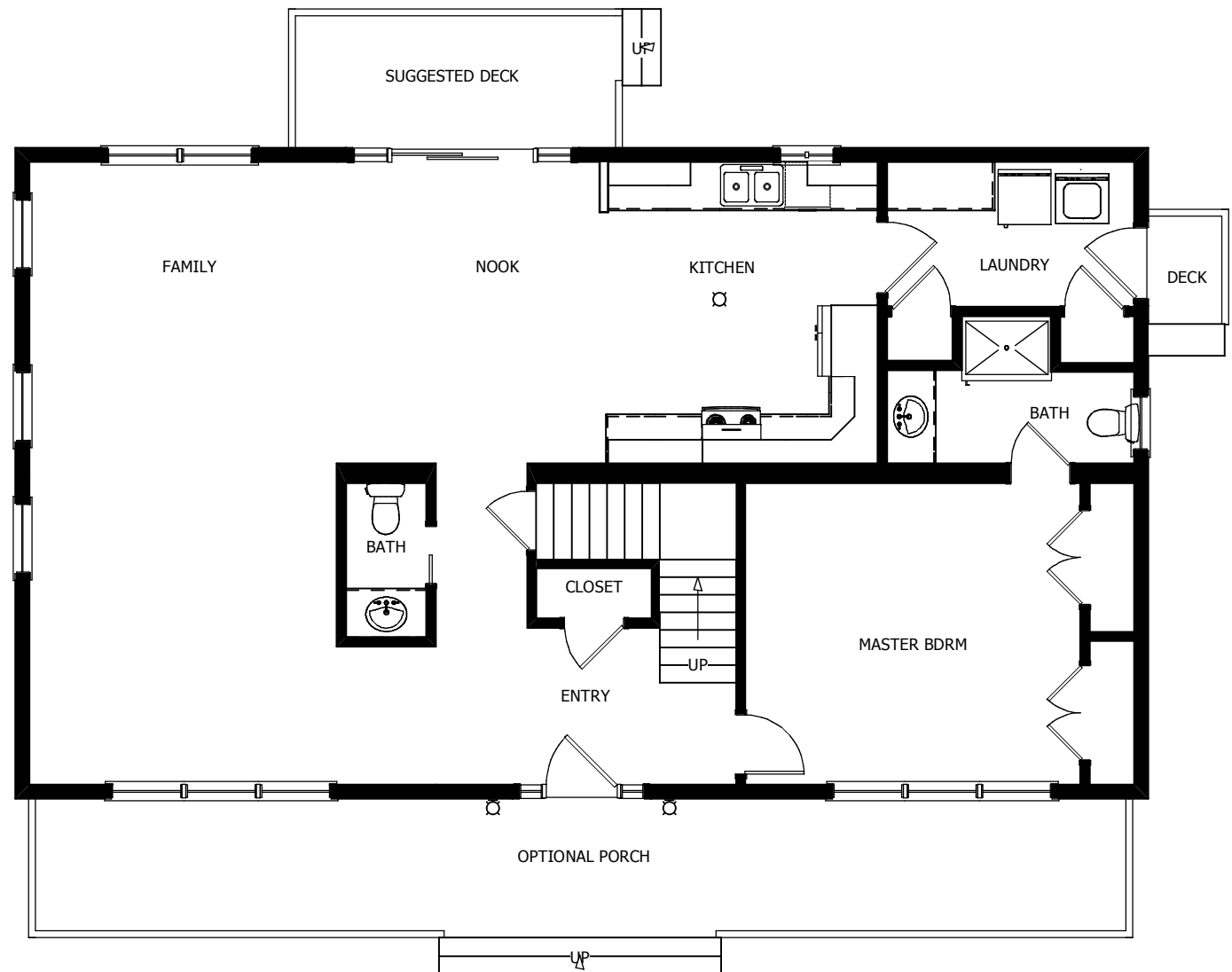
1st Floor 1320 s.f.

2nd Floor 1320 s.f.

Total Living Area
2640 s.f.

Shown with optional
porch

The Watertown plan offers a large open layout with a master suite on the 1st level. The plan also offers 4 additional bedrooms on the second level or an option for a additional family space in lieu of a bedroom.



1st Floor



560 Turnpike Street
Canton, MA 02021

Phone: 781-828-2100

Fax: 781-828-1050

Info@avalonbuildingsystems.com
www.avalonbuildingsystems.com

The Watertown

The Avalon Collection

Engineered homes built magnificently, promptly, affordably.

Two Story Plan

5 Bedrooms

3.5 Baths

(1st floor Master BR)

48'-0" x 27'-6"

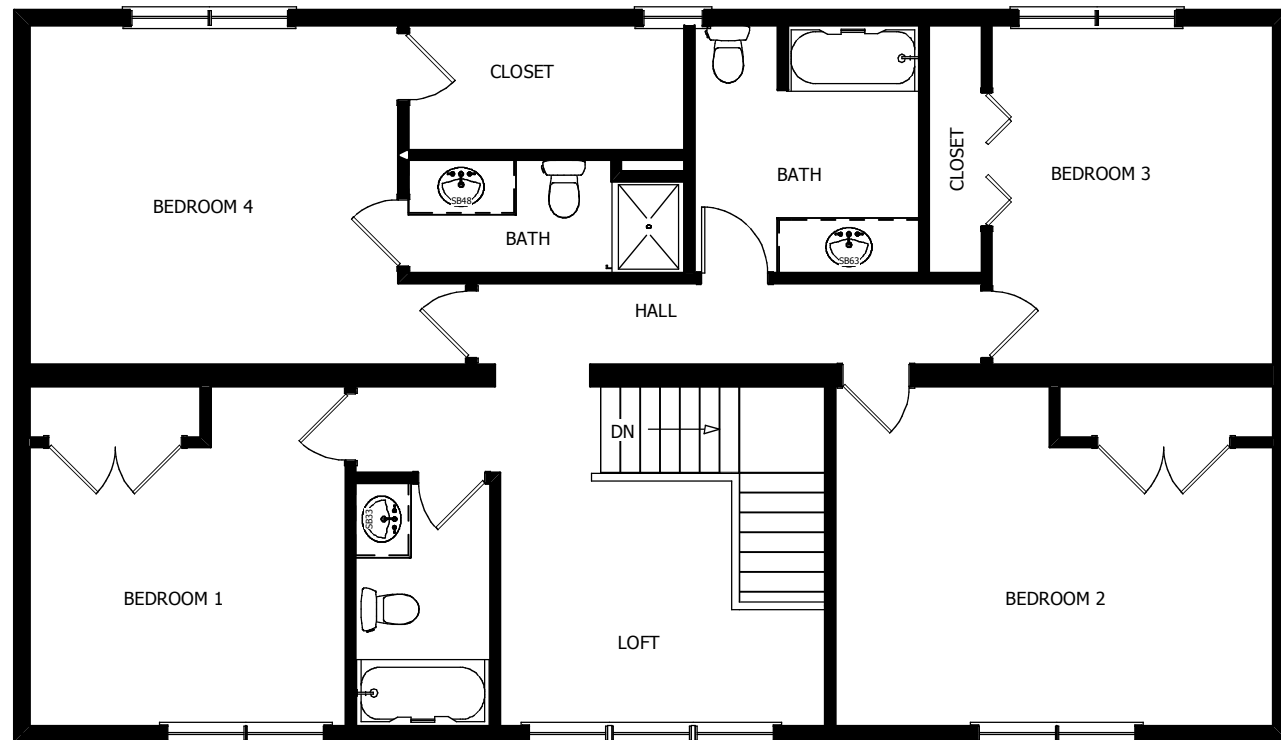
1st Floor 1320 s.f.

2nd Floor 1320 s.f.

Total Living Area
2640 s.f.

Shown with optional
porch

The Watertown plan offers a large open layout with a master suite on the 1st level. The plan also offers 4 additional bedrooms on the second level or an option for an additional family space in lieu of a bedroom.



2nd Floor



560 Turnpike Street
Canton, MA 02021

Phone: 781-828-2100

Fax: 781-828-1050

Info@avalonbuildingsystems.com

www.avalonbuildingsystems.com