

The Essex

The Avalon Collection

Engineered homes built magnificently, promptly, affordably.

Cape Style Plan

4 Bedrooms
3 Bath

52'-0" x 27'-6"

1st Floor 1430 s.f.

2nd Floor 793 s.f.
(To be finished on site)

Total Living Area
2223 s.f.

Optional Porch as
Shown

The Cape Essex is a lovely four bedroom cape which features the master bedroom suite on the 1st floor. The plan also has a large kitchen and dining area which flow well into the living room



560 Turnpike Street
Canton, MA 02021
Phone: 781-828-2100
Fax: 781-828-1050

Info@avalonbuildingsystems.com
www.avalonbuildingsystems.com

The Essex

The Avalon Collection

Engineered homes built magnificently, promptly, affordably.

Cape Style Plan

4 Bedrooms
3 Bath

52'-0" x 27'-6"

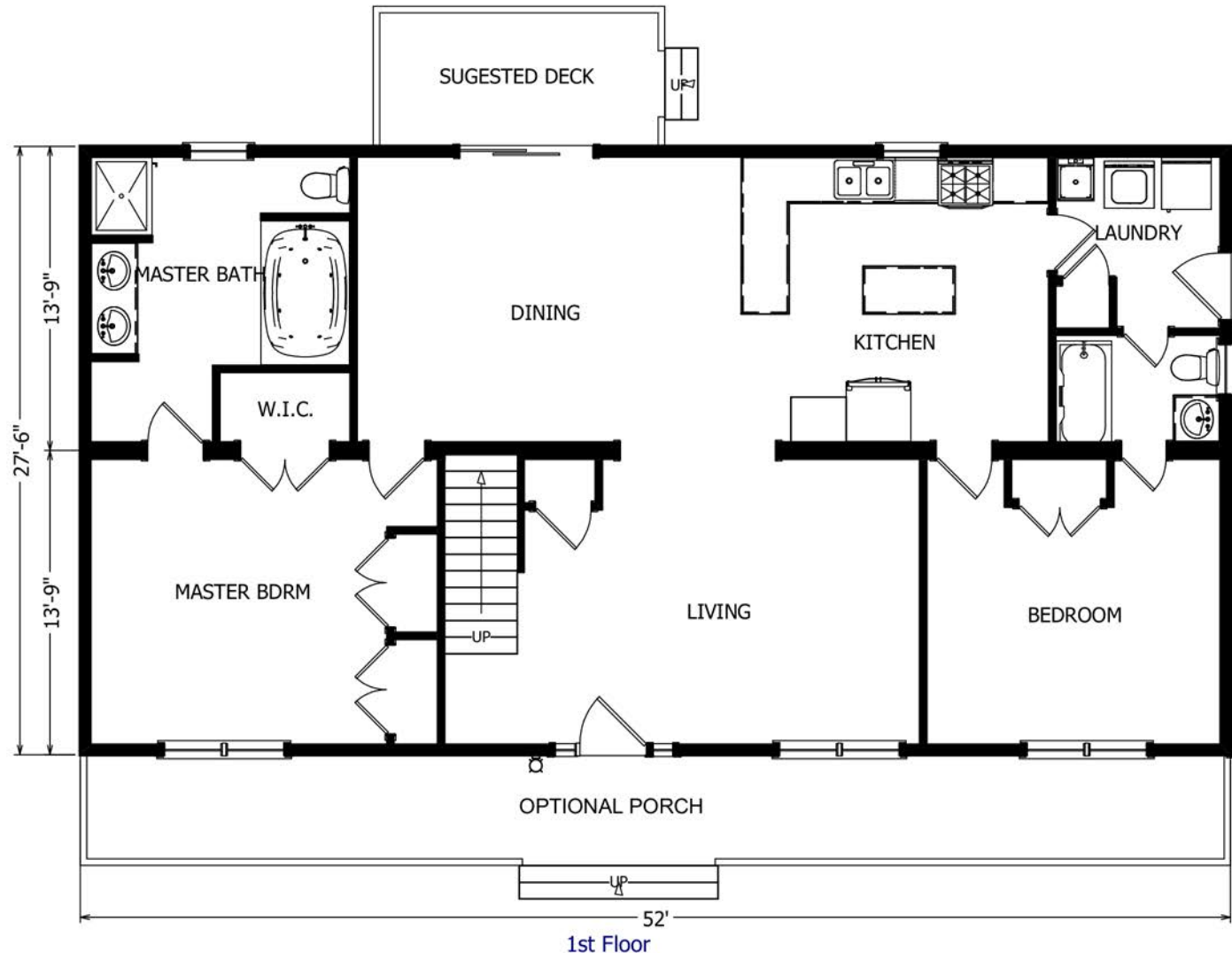
1st Floor 1430 s.f.

2nd Floor 793 s.f.
(To be finished on site)

Total Living Area
2223 s.f.

Optional Porch as
Shown

The Cape Essex is a lovely four bedroom cape which features the master bedroom suite on the 1st floor. The plan also has a large kitchen and dining area which flow well into the living room



560 Turnpike Street
Canton, MA 02021
Phone: 781-828-2100
Fax: 781-828-1050

Info@avalonbuildingsystems.com
www.avalonbuildingsystems.com

The Essex

The Avalon Collection

Engineered homes built magnificently, promptly, affordably.

Cape Style Plan

4 Bedrooms
3 Bath

52'-0" x 27'-6"

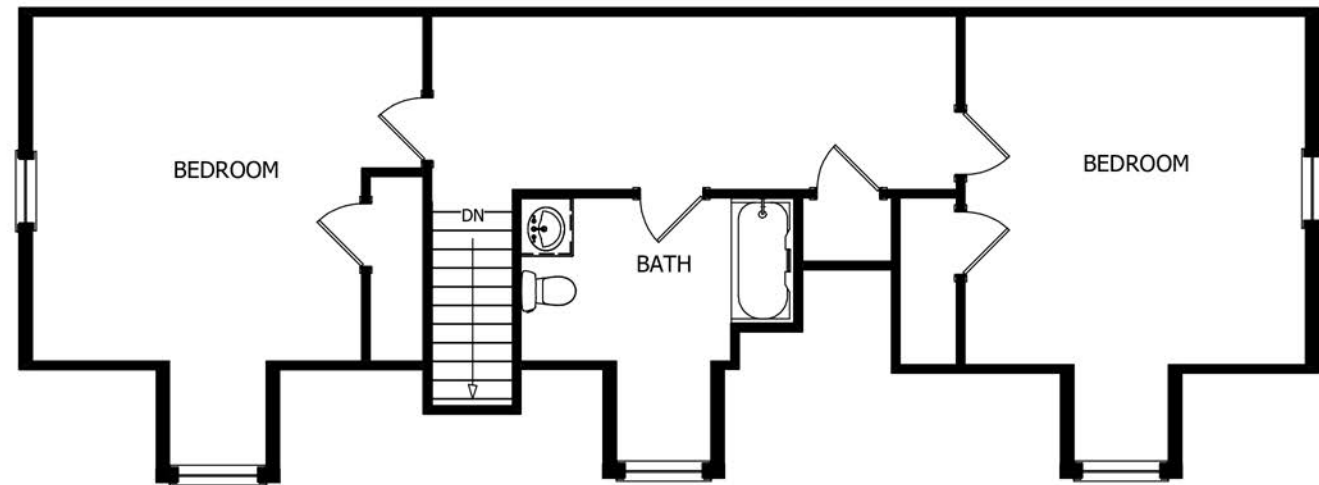
1st Floor 1430 s.f.

2nd Floor 793 s.f.
(To be finished on site)

Total Living Area
2223 s.f.

Optional Porch as
Shown

The Cape Essex is a lovely four bedroom cape which features the master bedroom suite on the 1st floor. The plan also has a large kitchen and dining area which flow well into the living room



Second Floor
(To be finished on site)



560 Turnpike Street
Canton, MA 02021
Phone: 781-828-2100
Fax: 781-828-1050

Info@avalonbuildingsystems.com
www.avalonbuildingsystems.com