

The Brookfield

The Avalon Collection

Engineered homes built magnificently, promptly, affordably.

Cape Style Plan

4 Bedrooms
3 Baths

50'-0" x 57'-6"

First Floor Living Area
1,595 s.f.

Second Floor 864 s.f.
To be finished on site

Optional Bonus Room
312 s.f.

Total Living Area
2,459 s.f.

The Brookfield is a cape style plan which offers a large living area with a garage and optional bonus room above. The plan includes a master suite on the first floor with a large master bathroom. It has a dining room and family room with vaulted ceilings. The optional second floor includes two additional bedrooms and bathroom.



560 Turnpike Street
Canton, MA 02021
Phone: 781-828-2100
Fax: 781-828-1050

Info@avalonbuildingsystems.com
www.avalonbuildingsystems.com

The Brookfield

The Avalon Collection

Engineered homes built magnificently, promptly, affordably.

Cape Style Plan

4 Bedrooms

3 Baths

50'-0" x 57'-6"

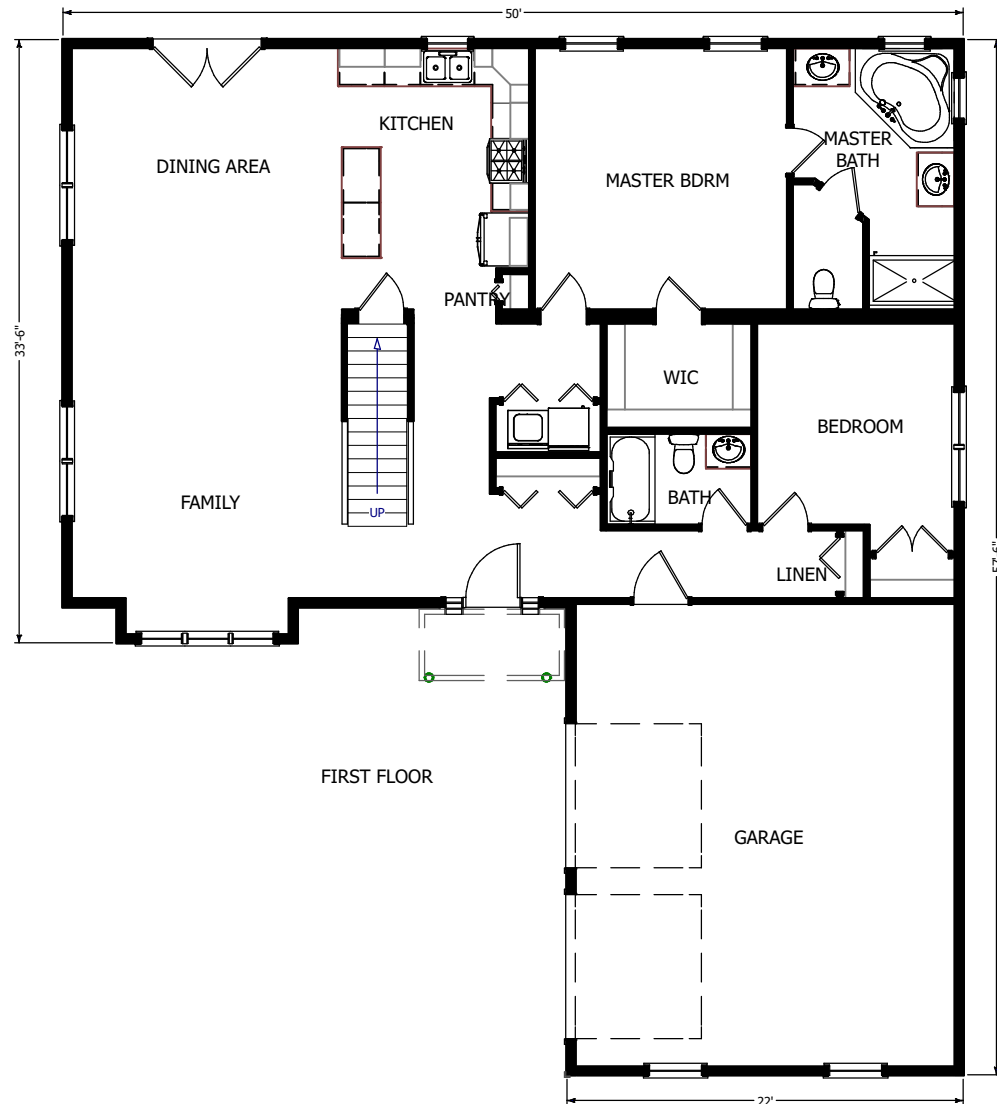
First Floor Living Area
1,595 s.f.

Second Floor 864 s.f.
To be finished on site

Optional Bonus Room
312 s.f.

Total Living Area
2,459 s.f.

The Brookfield is a cape style plan which offers a large living area with a garage and optional bonus room above. The plan includes a master suite on the first floor with a large master bathroom. It has a dining room and family room with vaulted ceilings. The optional second floor includes two additional bedrooms and bathroom.



560 Turnpike Street

Canton, MA 02021

Phone: 781-828-2100

Fax: 781-828-1050

Info@avalonbuildingsystems.com

www.avalonbuildingsystems.com

The Brookfield

The Avalon Collection

Engineered homes built magnificently, promptly, affordably.

Cape Style Plan

4 Bedrooms

3 Baths

50'-0" x 57'-6"

First Floor Living Area
1,595 s.f.

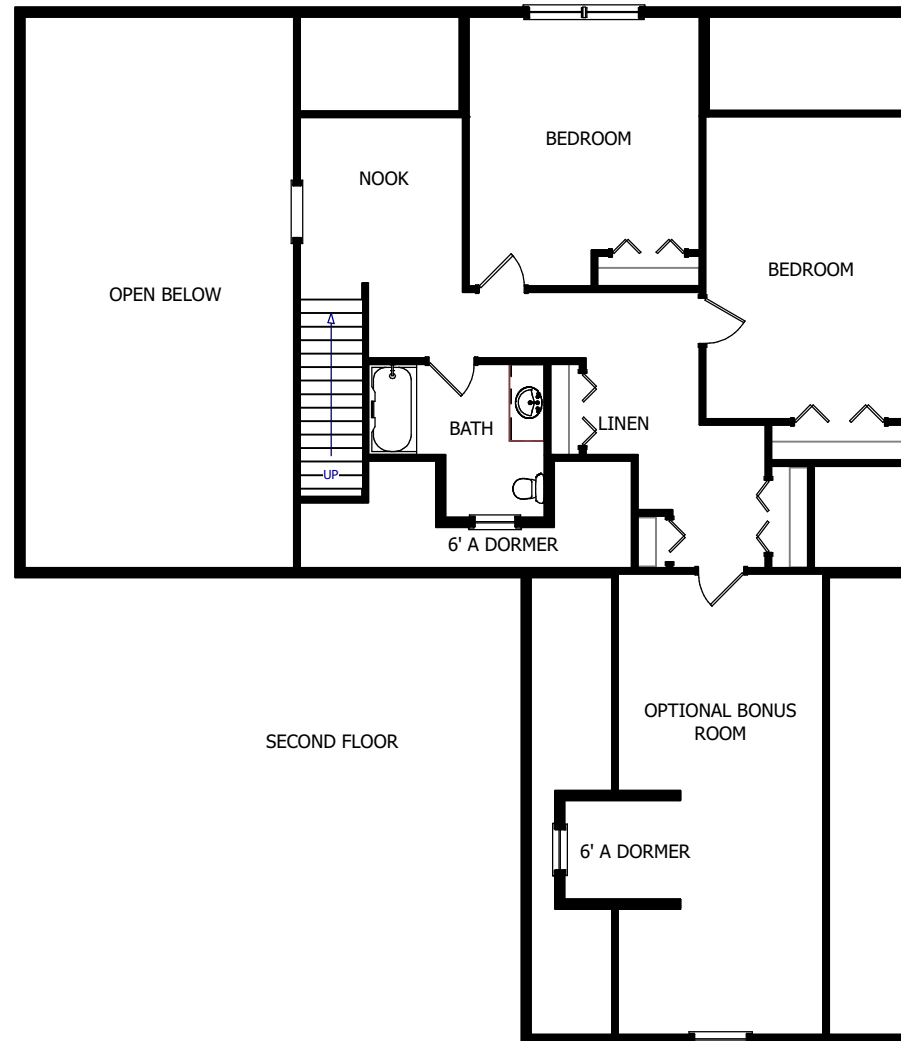
Second Floor 864 s.f.
To be finished on site

Optional Bonus Room
312 s.f.

Total Living Area
2,459 s.f.

The Brookfield is a cape style plan which offers a large living area with a garage and optional bonus room above. The plan includes a master suite on the first floor with a large master bathroom. It has a dining room and family room with vaulted ceilings.

The optional second floor includes two additional bedrooms and bathroom.



560 Turnpike Street

Canton, MA 02021

Phone: 781-828-2100

Fax: 781-828-1050

Info@avalonbuildingsystems.com

www.avalonbuildingsystems.com