

The Ashland

The Avalon Collection

Engineered homes built magnificently, promptly, affordably.

Two Story Plan

4 Bedrooms /
3.5 Baths

(1st floor Master BR)

43'-0" x 27'-6"

1st Floor 1,167 s.f.

2nd Floor 756 s.f.

Total Living area
1923 s.f.

Optional Garage
22'-10" x 23'-6"

The Ashland is a charming colonial plan with a large living room featuring a master bedroom suite on the first floor with three bedrooms on the second level. The plan also offers three and half bathrooms.

(Shown with Optional 2 car Garage)



560 Turnpike Street
Canton, MA 02021

Phone: 781-828-2100

Fax: 781-828-1050

Info@avalonbuildingsystems.com
www.avalonbuildingsystems.com

The Ashland

The Avalon Collection

Engineered homes built magnificently, promptly, affordably.

Two Story Plan

4 Bedrooms /
3.5 Baths

(1st floor Master BR)

43'-0" x 27'-6"

1st Floor 1,167 s.f.

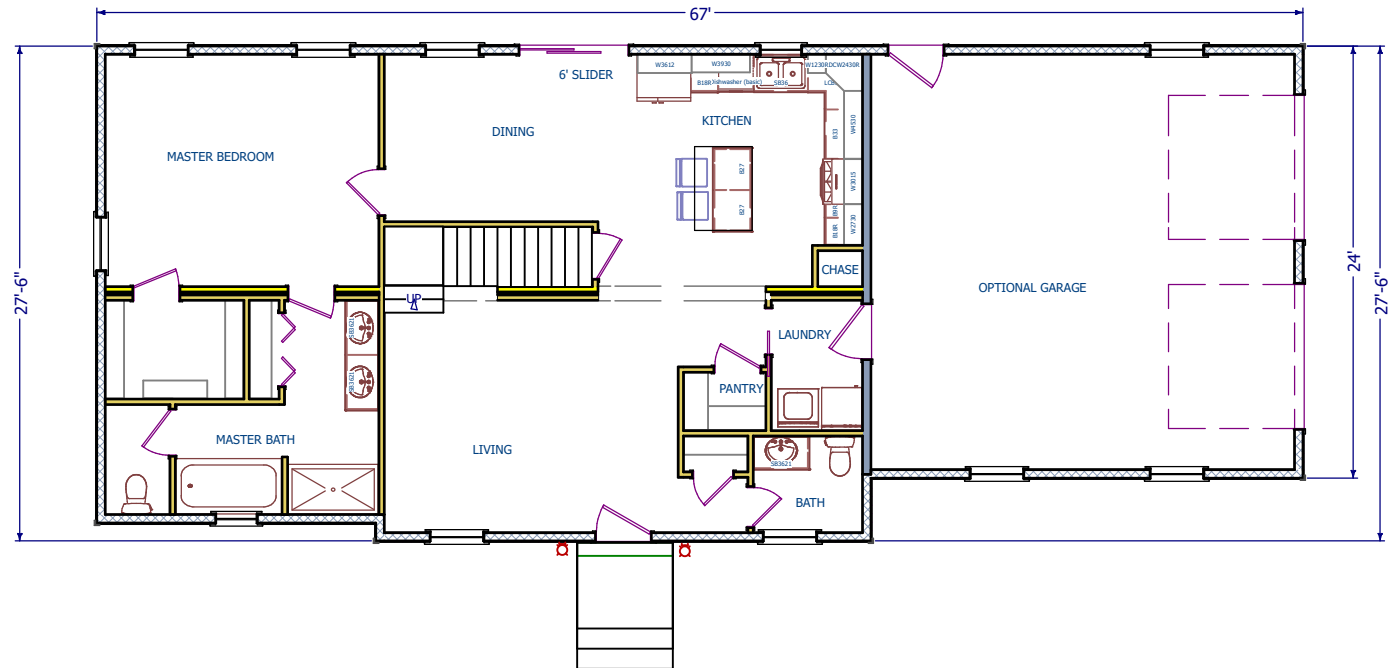
2nd Floor 756 s.f.

Total Living area
1923 s.f.

Optional Garage
22'-10" x 23'-6"

The Ashland is a charming colonial plan with a large living room featuring a master bedroom suite on the first floor with three bedrooms on the second level. The plan also offers three and half bathrooms.

(Shown with Optional 2 car Garage)



1st Floor



560 Turnpike Street
Canton, MA 02021

Phone: 781-828-2100

Fax: 781-828-1050

Info@avalonbuildingsystems.com

www.avalonbuildingsystems.com

The Ashland

The Avalon Collection

Engineered homes built magnificently, promptly, affordably.

Two Story Plan

4 Bedrooms /
3.5 Baths

(1st floor Master BR)

43'-0" x 27'-6"

1st Floor 1,167 s.f.

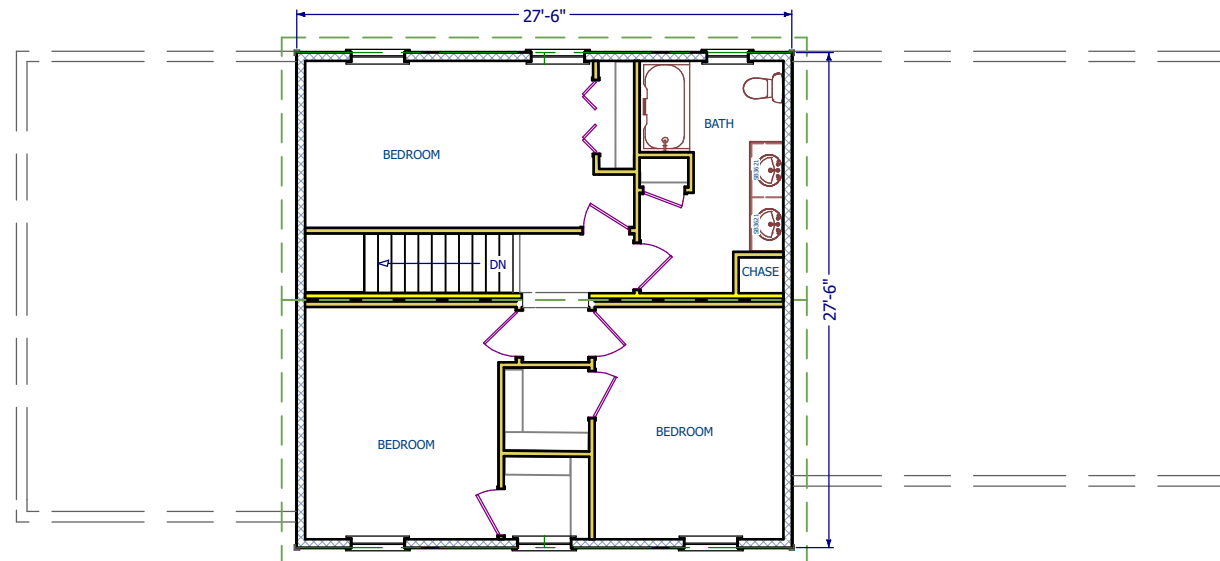
2nd Floor 756 s.f.

Total Living area
1923 s.f.

Optional Garage
22'-10" x 23'-6"

The Ashland is a charming colonial plan with a large living room featuring a master bedroom suite on the first floor with three bedrooms on the second level. The plan also offers three and half bathrooms.

(Shown with Optional 2 car Garage)



2nd Floor



560 Turnpike Street
Canton, MA 02021

Phone: 781-828-2100

Fax: 781-828-1050

Info@avalonbuildingsystems.com

www.avalonbuildingsystems.com