

# Small ADA Ranch

# The Avalon Collection

*Engineered homes built magnificently, promptly, affordably.*

## Single Story Plan

1 Bedroom  
1 Bath

29'-0" x 27'-6"

Total Living Area  
798 s.f.

The Small ADA ranch is an accessible ranch with one bedroom and one bathroom. The plan includes an open living, kitchen and dining area. The plan can be adapted as an In-Law addition.



560 Turnpike Street  
Canton, MA 02021  
Phone: 781-828-2100  
Fax: 781-828-1050

Info@avalonbuildingsystems.com  
www.avalonbuildingsystems.com

# Small ADA Ranch

# The Avalon Collection

*Engineered homes built magnificently, promptly, affordably.*

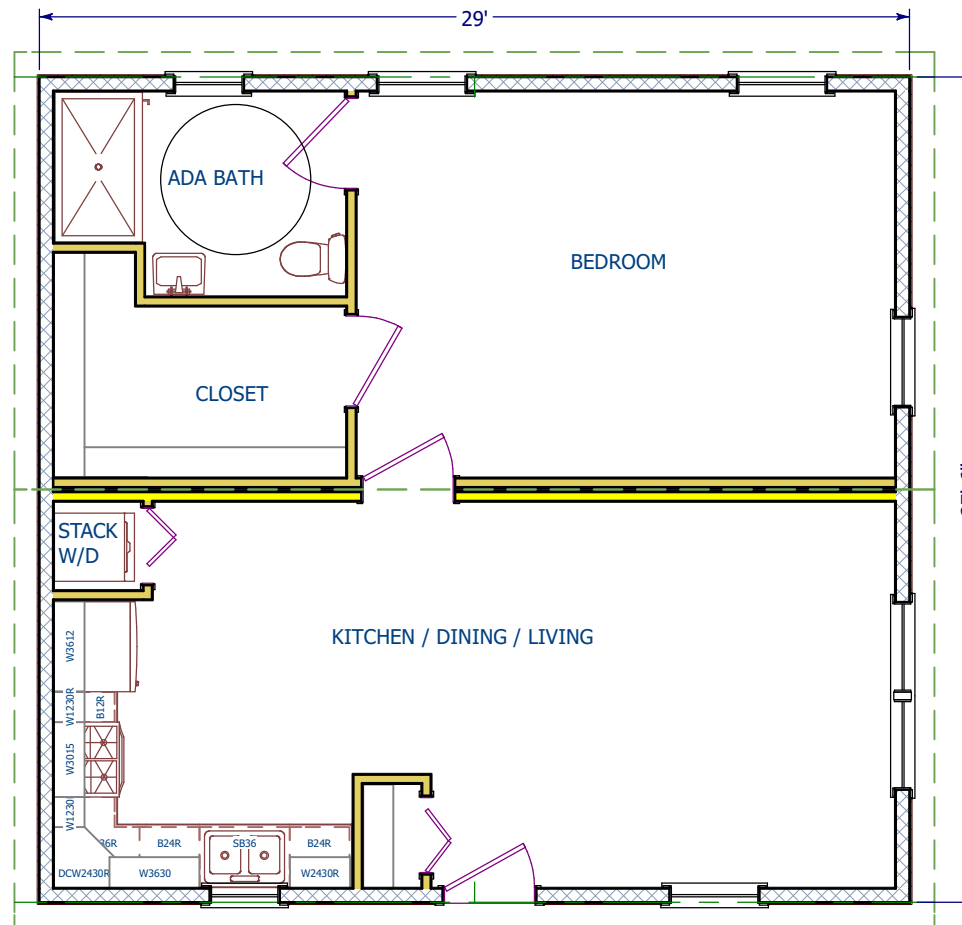
## Single Story Plan

1 Bedroom  
1 Bath

29'-0" x 27'-6"

Total Living Area  
798 s.f.

The Small ADA ranch is an accessible ranch with one bedroom and one bathroom. The plan includes an open living, kitchen and dining area. The plan can be adapted as an In-Law addition.



1st Floor



560 Turnpike Street  
Canton, MA 02021  
Phone: 781-828-2100  
Fax: 781-828-1050

Info@avalonbuildingsystems.com  
www.avalonbuildingsystems.com