

# General Office

# The Avalon Collection

*Engineered homes built magnificently, promptly, affordably.*

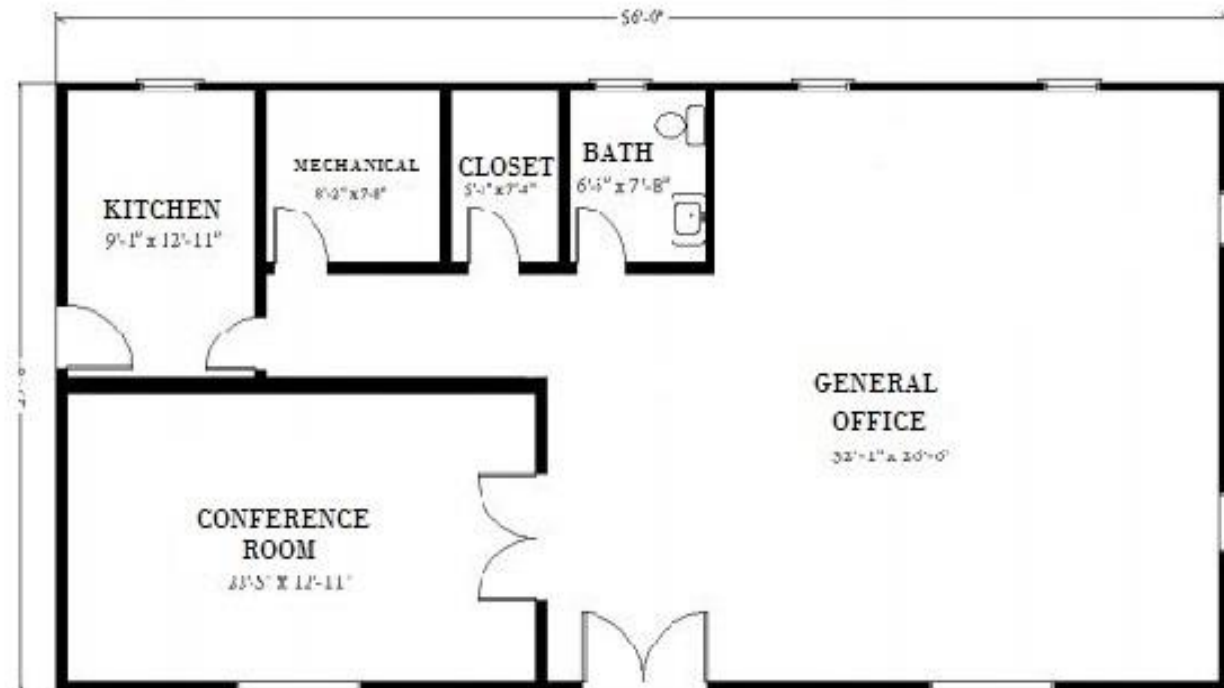
## Commercial General Office Building

27'-6" x 56'-0"

Total Square  
Footage  
1,540 s.f.



The General Office building is a single floor design that is ideal for small to midsize companies and can be customized to meet specific needs of a company.



1ST FLOOR



560 Turnpike Street  
Canton, MA 02021  
Phone: 781-828-2100  
Fax: 781-828-1050

Info@avalonbuildingsystems.com  
www.avalonbuildingsystems.com